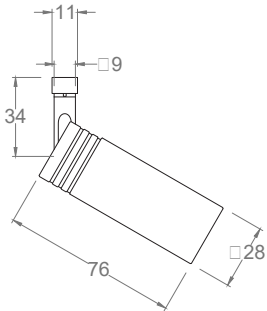
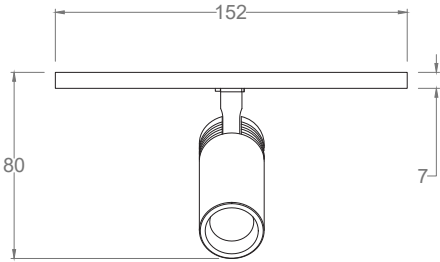


# Tini B Micro

Low voltage track projectors | IP40 | Class III | Dimmable



## LIGHT SOURCE & OPTIC

- Power**  
4W
- Lens**  
15°/30°/60°/Elliptical
- Beam Direction**  
Adjustable:  
Tilting +/-90°, rotating +/-355°  
Symmetrical
- Material**  
PMMA

**LED quantity**  
1

**Binning**  
2 MacAdam steps

**Color temperature & quality**  
2200K CRI>80  
2700K CRI>80/90  
3000K CRI>80/90  
4000K CRI>80  
5000K CRI>80

**Lifetime (Ta 25°)**  
L80 >60.000 hrs

**Output (3000K CRI>90)**  
357 lm

## FIXTURE

- Dimensions**  
Ø 28mm x H 76mm (cylinder)
- Material**  
Aluminium
- Body finishes**  
Black (RAL 9005)  
Dark Bronze  
White (RAL 9003)

**Weight**  
90gr

**Mounting**  
On track

**Fixing**  
Track Connector

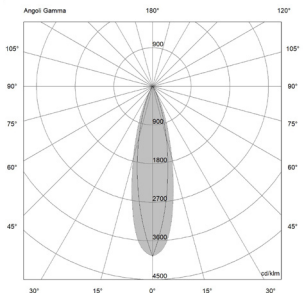
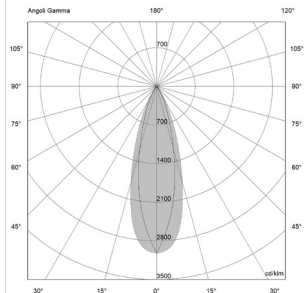
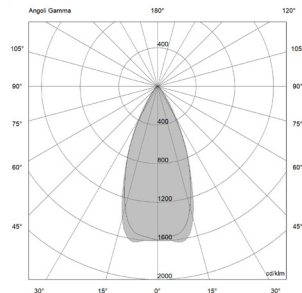
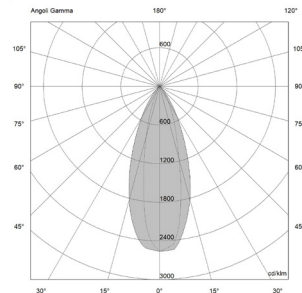
**Working temperature**  
-20° / +40°

## ELECTRICAL FEATURES

- Power supply**  
Constant tension:  
24-48Vdc  
Typical Vf= 3V x 3
- Driver requirement**  
Remote (not included)
- Control**  
On/off  
DALI  
Broadcast

# Tini B Micro

## PHOTOMETRIC DATA (3000K CRI>90)

4W - 15°   UGR 16			4W - 30°   UGR 19			4W - 60°   UGR 21			4W- 25°x40°   UGR 15		
											
H (m)	D (m)	Eav (lx)	H (m)	D (m)	Eav (lx)	H (m)	D (m)	Eav (lx)	H (m)	D (m)	Eav (lx)
1	0.37	462	1	0.45	328	1	0.85	119	1	0.44-0.75	452
2	0.73	115	2	0.89	82	2	1.69	30	2	0.89-1.50	113
3	1.10	51	3	1.34	36	3	2.54	13	3	1.33-2.25	50
4	1.47	29	4	1.78	21	4	3.39	7	4	1.78-3.00	28
5	1.83	18	5	2.23	13	5	4.23	5	5	2.22-3.35	18
Total lumen output 192 lm			Total lumen output 178 lm			Total lumen output 129 lm			Total lumen output 283 lm		
Efficacy 48 lm/W			Efficacy 44 lm/W			Efficacy 32 lm/W			Efficacy 71 lm/W		

# Tini B Micro

## INSTALLATION ACCESSORIES

Compatible with 24-48Vdc Micro Track:

Standard track (A00918.\_0)  
1m



Trimless track (A01064.\_0)  
1m

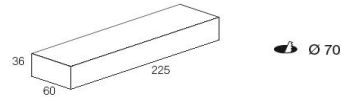


Suspended track (A01664.\_0)  
1m



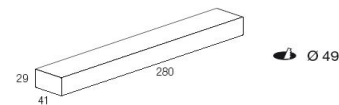
## SUGGESTED REMOTE DRIVER

**On/Off :**  
CC70-F-24-N  
CV70-F-48-N



For On/Off and DALI version.  
Please consider 1 address for each DALI projector.

**Multifunction (DALI 2, 0/1-10V, PUSH):**  
CV75-DM-24-NI  
CV75-DM-48-NI



For Broadcast version.  
Please consider 1 address for each driver in case of DALI control.

Other options upon request