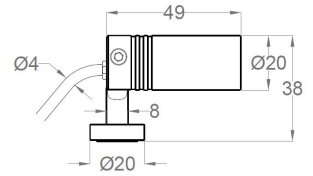
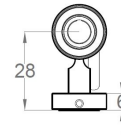
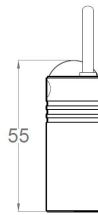


Milli with honeycomb louver

Projectors | IP67 | Class III | Dimmable



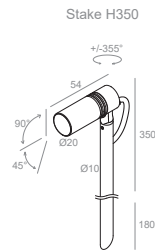
Applique



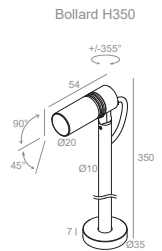
Stake



Tree strap mounting



Stake H350



Bollard H350

LIGHT SOURCE & OPTIC

Power
2.5W

Lens
10°/25°/40°/60°

Beam Direction
Adjustable: +/-90° Rotating +/-355°
Symmetrical

Material
PMMA + glass

LED quantity
1

Binning
2 MacAdam steps

Color temperature & quality
2200K CRI>80
2700K CRI>90
3000K CRI>90
3500K CRI>90
4000K CRI>90

Lifetime (25°C)
L80 > 66.600 hrs

FIXTURE

Dimensions
Ø 20mm x H 49mm (cylinder)

Material
Aluminium

Body finishes
Black
Fir Green (RAL6009)
Bright Brown
Massive Brass
Grey
Stainless Steel 316L

Weight
40gr

Mounting
On surface

Fixing
Applique
Stake
Tree strap mounting
Stake H350
Bollard H350

Working temperature
-20° / +40°

ELECTRICAL FEATURES

Power supply
Constant current:
700mA
Typical Vf= 3V

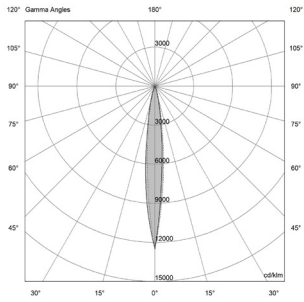
Driver requirement
Remote (not included)

Control
On/off
Push switch
Phase Cut
0/1-10 V
Casambi
DALI

Milli with honeycomb louver

PHOTOMETRIC DATA (3000K CRI>90)

2.5W-10° | UGR 10

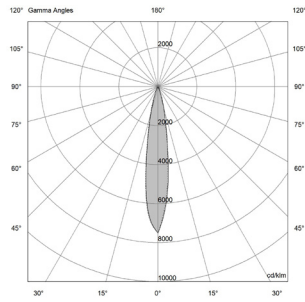


H (m)	D (m)	Eav (lx)
1	0.20	628
2	0.41	157
3	0.61	70
4	0.81	39
5	1.02	25

Total lumen output
83 lm

Efficacy
35 lm/W

2.5W-25° | UGR 14

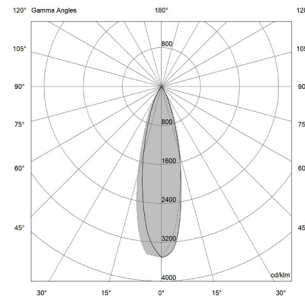


H (m)	D (m)	Eav (lx)
1	0.30	401
2	0.60	100
3	0.90	45
4	1.21	25
5	1.51	16

Total lumen output
84 lm

Efficacy
35 lm/W

2.5W-40° | UGR 18

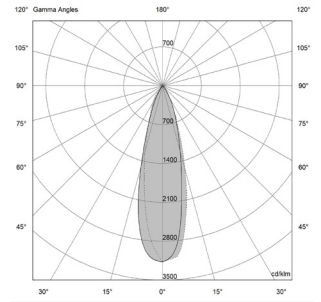


H (m)	D (m)	Eav (lx)
1	0.47	156
2	0.91	39
3	1.37	17
4	1.83	10
5	2.28	6

Total lumen output
72 lm

Efficacy
29 lm/W

2.5W-60° | UGR 18



H (m)	D (m)	Eav (lx)
1	0.48	102
2	0.96	25
3	1.44	11
4	1.92	6
5	2.39	4

Total lumen output
51 lm

Efficacy
21 lm/W

Milli with honeycomb louver

INTERCHANGEABLE ACCESSORIES

Low glare visor: A01445._0

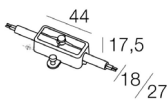


Low glare tube visor: A01444._0



INSTALLATION ACCESSORIES

Watertight connector: A00357.40



SUGGESTED REMOTE DRIVER

On/off:
CC14-F-700-PI



Dimmable (DALI 2):
CC10-D-700-PI



Other options upon request