

## LIGHT SOURCE

LED quantity	1
Power max	1 W
Total lumen output (3000K CRI>90)	1W: 20° - 51 lm 30° - 46 lm 50° - 41 lm
Efficacy lm/W (3000K CRI>90)	1W: 20° - 51 lm/W 30° - 46 lm/W 50° - 41 lm/W
CRI	>80 – >90
LED Temperature	2200K - 2700K CRI>90 – 3000K CRI>90 – 3500K CRI>90 – 4000K CRI>90
Average operational life	50.000 hours

## OPTIC

Material	PMMA
Available optics	20° - 30° - 50°
Beam direction	Fixed
Flux symmetry	Symmetrical

## FIXTURE

Material	Aluminum, brass
Available finishes	Hard coat anodized: 3 - Gray 4 - Black Chrome plated: 1 - Gold chrome 1 - Shiny chrome As per material: E - Massive Brass
IP Rate	IP40
Working Temperature	-20° ÷ +40°
Integrated fixing Systems	-

## ELECTRICAL FEATURES

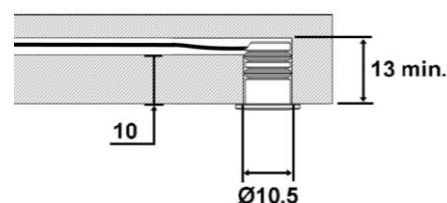
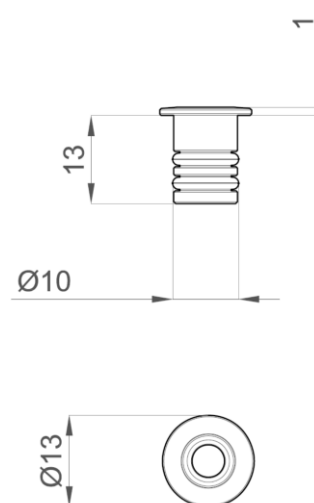
Driver	Remote
Dimmable	Push, 1-10V, DALI
Connection	In series at 350mA
Class	III

## MECHANICAL FEATURES

Dimensions	Ø13.5 x 13 mm
Weight	8 gr
Installation	Wall, ceiling recessed
Cut-out	Ø10.5 mm
Use	Indoor

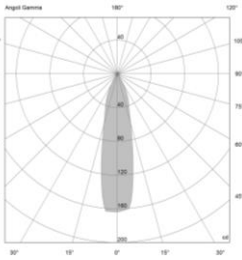
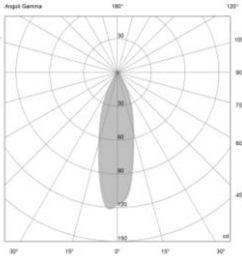
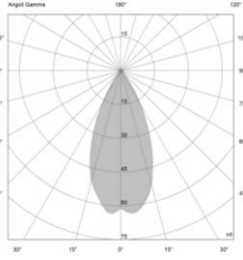
## ACCESSORIES

Visors	-
Filters	-
Box/ Frame	-
Fixing system	-



Cable exit from side

PHOTOMETRIC DATA

20° Lens – 1W	30° Lens – 1W	50° Lens – 1W																																																																																					
																																																																																							
<table><tr><th>H(m)</th><th>D(m)</th><th>E<sub>max</sub>(lx)</th><th>E<sub>av</sub>(lx)</th></tr><tr><td colspan="4"><b>20°</b></td></tr><tr><td><u>1.00</u></td><td>0.44</td><td>169</td><td>107</td></tr><tr><td><u>2.00</u></td><td>0.88</td><td>42</td><td>27</td></tr><tr><td><u>3.00</u></td><td>1.32</td><td>19</td><td>12</td></tr><tr><td><u>4.00</u></td><td>1.77</td><td>11</td><td>7</td></tr><tr><td><u>5.00</u></td><td>2.21</td><td>7</td><td>4</td></tr></table>	H(m)	D(m)	E <sub>max</sub> (lx)	E <sub>av</sub> (lx)	<b>20°</b>				<u>1.00</u>	0.44	169	107	<u>2.00</u>	0.88	42	27	<u>3.00</u>	1.32	19	12	<u>4.00</u>	1.77	11	7	<u>5.00</u>	2.21	7	4	<table><tr><th>H(m)</th><th>D(m)</th><th>E<sub>max</sub>(lx)</th><th>E<sub>av</sub>(lx)</th></tr><tr><td colspan="4"><b>30°</b></td></tr><tr><td><u>1.00</u></td><td>0.52</td><td>121</td><td>74</td></tr><tr><td><u>2.00</u></td><td>1.04</td><td>30</td><td>19</td></tr><tr><td><u>3.00</u></td><td>1.56</td><td>13</td><td>8</td></tr><tr><td><u>4.00</u></td><td>2.07</td><td>8</td><td>5</td></tr><tr><td><u>5.00</u></td><td>2.59</td><td>5</td><td>3</td></tr></table>	H(m)	D(m)	E <sub>max</sub> (lx)	E <sub>av</sub> (lx)	<b>30°</b>				<u>1.00</u>	0.52	121	74	<u>2.00</u>	1.04	30	19	<u>3.00</u>	1.56	13	8	<u>4.00</u>	2.07	8	5	<u>5.00</u>	2.59	5	3	<table><tr><th>H(m)</th><th>D(m)</th><th>E<sub>max</sub>(lx)</th><th>E<sub>av</sub>(lx)</th></tr><tr><td colspan="4"><b>50°</b></td></tr><tr><td><u>1.00</u></td><td>0.87</td><td>64</td><td>37</td></tr><tr><td><u>2.00</u></td><td>1.75</td><td>16</td><td>9</td></tr><tr><td><u>3.00</u></td><td>2.62</td><td>7</td><td>4</td></tr><tr><td><u>4.00</u></td><td>3.50</td><td>4</td><td>2</td></tr><tr><td><u>5.00</u></td><td>4.37</td><td>3</td><td>1</td></tr></table>	H(m)	D(m)	E <sub>max</sub> (lx)	E <sub>av</sub> (lx)	<b>50°</b>				<u>1.00</u>	0.87	64	37	<u>2.00</u>	1.75	16	9	<u>3.00</u>	2.62	7	4	<u>4.00</u>	3.50	4	2	<u>5.00</u>	4.37	3	1	
H(m)	D(m)	E <sub>max</sub> (lx)	E <sub>av</sub> (lx)																																																																																				
<b>20°</b>																																																																																							
<u>1.00</u>	0.44	169	107																																																																																				
<u>2.00</u>	0.88	42	27																																																																																				
<u>3.00</u>	1.32	19	12																																																																																				
<u>4.00</u>	1.77	11	7																																																																																				
<u>5.00</u>	2.21	7	4																																																																																				
H(m)	D(m)	E <sub>max</sub> (lx)	E <sub>av</sub> (lx)																																																																																				
<b>30°</b>																																																																																							
<u>1.00</u>	0.52	121	74																																																																																				
<u>2.00</u>	1.04	30	19																																																																																				
<u>3.00</u>	1.56	13	8																																																																																				
<u>4.00</u>	2.07	8	5																																																																																				
<u>5.00</u>	2.59	5	3																																																																																				
H(m)	D(m)	E <sub>max</sub> (lx)	E <sub>av</sub> (lx)																																																																																				
<b>50°</b>																																																																																							
<u>1.00</u>	0.87	64	37																																																																																				
<u>2.00</u>	1.75	16	9																																																																																				
<u>3.00</u>	2.62	7	4																																																																																				
<u>4.00</u>	3.50	4	2																																																																																				
<u>5.00</u>	4.37	3	1																																																																																				

NOTES