

Eclissi Mini IP67

Steps light | IP67 | Class III | Dimmable



Eclissi Mini 360



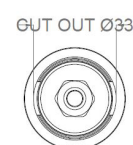
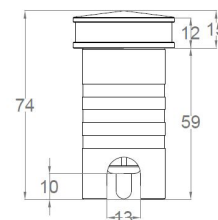
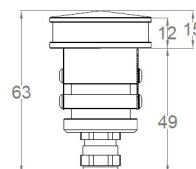
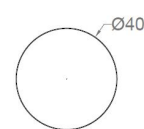
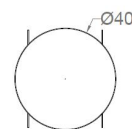
Eclissi Mini 180



Eclissi Mini 90



Eclissi Mini 90x2



LIGHT SOURCE & OPTIC

Power
2W

Emission
Diffuse

Beam Direction
Fixed, Symmetrical/ Asymmetrical

Material
Methacrylate

LED quantity
1

Binning
2 MacAdam Steps

Color temperature & quality
2200K CRI>80
2700K CRI>90
3000K CRI>90
4000K CRI>90

Lifetime (Ta 25°)
L80 >60.000 hrs

Output (3000K CRI>90)
214 lm

FIXTURE

Dimensions
Ø 40mm x H 63mm

Material
Aluminium

Body finishes
Black
Titanium
Dark bronze
Champagne gold
Gray

Weight
120gr

Mounting
Semirecessed on wall/floor

Fixing
With accessories:
Aluminum recessed box
Spring mounting support

Working temperature
-20° / +40°

ELECTRICAL FEATURES

Power supply
Constant tension: 24 Vdc

Driver requirement
Remote (not included)

Control
On/off
Push switch
Phase Cut
0/1-10 V
Casambi
DALI

Feature
Water Infiltration Protection System

Eclissi Mini IP67

PHOTOMETRIC DATA (3000K CRI>90)

2W - 90°	2W - 90°x2	2W - 180°	2W - 360°
Total lumen output 16 lm	Total lumen output 16 lm x 2	Total lumen output 30 lm	Total lumen output 60 lm
Efficacy 8 lm/W	Efficacy 16 lm/W	Efficacy 15 lm/W	Efficacy 30 lm/W

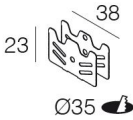
Eclissi Mini IP67

INSTALLATION ACCESSORIES

Aluminum recessed box (A08121.40)
Necessary element for installation at floor

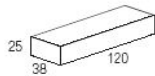


Spring mounting support (A01833._0)

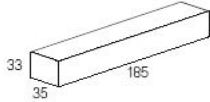


SUGGESTED REMOTE DRIVERS

On/Off :
CV30-F-24-PI



Dimmable (DALI 2) :
CV25-D-24-PI



Other options upon request