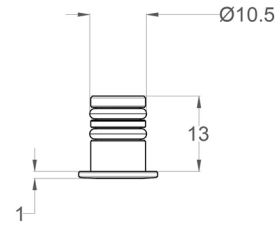


# Nano Tini i

Small recessed | IP40 | Class III | Dimmable



## LIGHT SOURCE & OPTIC

### Power

1W

### Lens

20°

30°

50°

### Beam Direction

Fixed

Symmetrical

### Material

PMMA

### LED quantity

1

### Binning

2 MacAdam steps

### Color temperature & quality

2200K CRI>80

2700K CRI>90

3000K CRI>90

3500K CRI>90

4000K CRI>90

### Lifetime

(L85) >55.000 hrs

## FIXTURE

### Dimensions

Ø 13,5 mm x H 13 mm

### Material

Aluminium

Massive Brass

### Body finishes

Black

Massive Brass

Gold Chrome

Gray

Shiny Chrome

White (RAL 9003)

### Weight

8 gr

### Mounting

Recessed: cut out Ø 10,5 mm

### Fixing

O-ring

### Working temperature

-20° / +40°

## ELECTRICAL FEATURES

### Power supply

Constant current:

350 mA

Typical Vf= 3V

### Driver requirement

Remote (not included)

### Control

On/off

Push switch

Phase Cut

0/1-10 V

Casambi

DALI

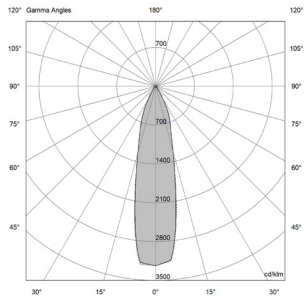
### Feature

Side exit cable

# Nano Tini i

## PHOTOMETRIC DATA (3000K CRI>90)

### 1W - 20° | UGR 24,7

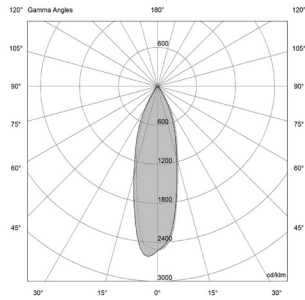


H (m)	D (m)	Eav (lx)
1	0.45	169
2	0.90	42
3	1.34	19
4	1.79	11
5	2.24	7

**Total lumen output**  
51 lm

**Efficacy**  
52 lm/W

### 1W - 30° | UGR 24,4

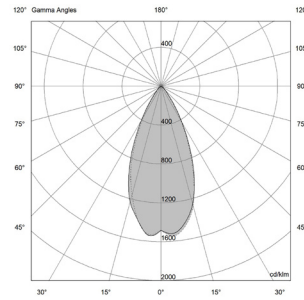


H (m)	D (m)	Eav (lx)
1	0.51	121
2	1.01	30
3	1.52	13
4	2.03	8
5	2.54	5

**Total lumen output**  
46 lm

**Efficacy**  
47 lm/W

### 1W - 50° | UGR 25,5



H (m)	D (m)	Eav (lx)
1	0.84	64
2	1.68	16
3	2.52	7
4	3.36	4
5	4.20	3

**Total lumen output**  
41 lm

**Efficacy**  
41 lm/W

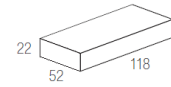
# Nano Tini i


---

## SUGGESTED REMOTE DRIVER

### On/off:

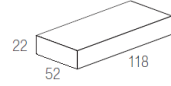
CC20-F-350-N




 Ø 55

### Multifunction (DALI 2, 0/1-10V, PUSH):

CC25-DM-350-N



 Ø 55

Other options upon request