

## LIGHT SOURCE

LED quantity	1	
Power max	1 W – 2 W	
Total lumen output (3000K CRI>90)	1W: 10° - 74 lm 25° - 80 lm 40° - 79 lm	2W: 10° - 100 lm 25° - 107 lm 40° - 106 lm
Efficacy lm/W (3000K CRI>90)	1W: 10° - 74 lm/W 25° - 80 lm/W 40° - 79 lm/W	2W: 10° - 50 lm/W 25° - 53 lm/W 40° - 53 lm/W
CRI	>80 – >90	
LED Temperature	2200K - 2700K CRI>90 – 3000K CRI>90 – 4000K	
Average operational life	50.000 hours	

## OPTIC

Material	PMMA
Available optics	10° - 25° - 40°
Beam direction	Adjustable +/-25°, rotating +/-360°
Flux symmetry	Symmetrical

## FIXTURE

Material	Aluminum
Available finishes	Chrome plated: 1 - Shiny chrome Hard coat anodized: 3 - Gray 4 - Black Powder coated: 7 - White (RAL 9003) B1 – Bronze (anodic)
IP Rate	IP40
Working Temperature	-20° ÷ +40°
Integrated fixing Systems	Springs

## ELECTRICAL FEATURES

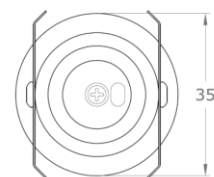
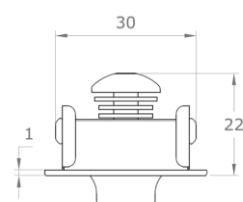
Driver	Remote
Dimmable	Push, 1-10V, DALI
Connection	In series at 350mA – 500mA
Class	III

## MECHANICAL FEATURES

Dimensions (body)	Ø35 x 22 mm
Weight	40 gr
Installation	Wall, ceiling recessed
Cut-out	Ø30 mm
Use	Indoor

## ACCESSORIES

Visors	-
Filters	-
Box/ Frame	-
Fixing system	-



**PHOTOMETRIC DATA**

10° Lens – 2W				25° Lens – 2W				40° Lens – 2W			
H(m)	D(m)	E <sub>max</sub> (lx)	E <sub>av</sub> (lx)	H(m)	D(m)	E <sub>max</sub> (lx)	E <sub>av</sub> (lx)	H(m)	D(m)	E <sub>max</sub> (lx)	E <sub>av</sub> (lx)
<b>10°</b>				<b>25°</b>				<b>40°</b>			
<u>1.00</u>	0.23	1267	779	<u>1.00</u>	0.33	699	449	<u>1.00</u>	0.50	337	203
<u>2.00</u>	0.45	317	195	<u>2.00</u>	0.66	175	112	<u>2.00</u>	1.00	84	51
<u>3.00</u>	0.68	141	87	<u>3.00</u>	0.99	78	50	<u>3.00</u>	1.50	37	23
<u>4.00</u>	0.90	79	49	<u>4.00</u>	1.32	44	28	<u>4.00</u>	2.00	21	13
<u>5.00</u>	1.13	51	31	<u>5.00</u>	1.65	28	18	<u>5.00</u>	2.50	13	8

**NOTES**

---



---