

## LIGHT SOURCE

LED quantity	2 x 1 LED	
Power max	2 x 1W - 2 x 2W	
Total lumen output (3000K)	2x1W: 10° - 103 lm x2 30° - 118 lm x 2 40° - 107 lm x2	2x1W: 10° - 143 lm x2 30° - 159 lm x 2 40° - 143 lm x2
Efficacy lm/W (3000K)	1W: 14° - 103 lm/W 18° - 118 lm/W 24° - 107 lm/W	1W: 14° - 71 lm/W 18° - 80 lm/W 24° - 71 lm/W
CRI	>80	
LED Temperature	2200K - 2700K - 3000K - 4000K	
Average operational life	50.000 hours	

## OPTIC

Material	PMMA
Available optics	10° - 30° - 40°
Beam direction	Fixed
Flux symmetry	Symmetrical

## FIXTURE

Material	Aluminum, Massive brass
Available body finishes	Hard coat anodized: 3 - Grey 4 - Black T - Titanium As per material: E - Massive brass
IP Rate	IP67
Working Temperature	-20° ÷ +40°
Integrated fixing Systems	-

## ELECTRICAL FEATURES

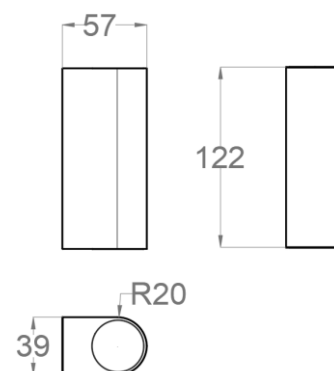
Driver	Remote Built-in driver
Dimmable	Push, 1-10, DALI On/off (110-240Vac)
Connection	In series at 350mA - 500mA In parallel at 24Vdc In parallel at 110-240Vac
Class	III (350Ma-500Ma , 24dc) II (110-240Vac)

## MECHANICAL FEATURES

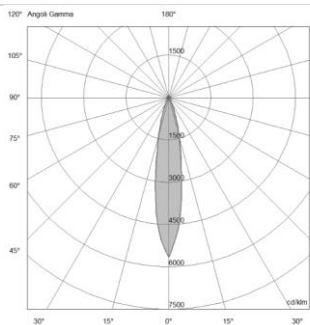
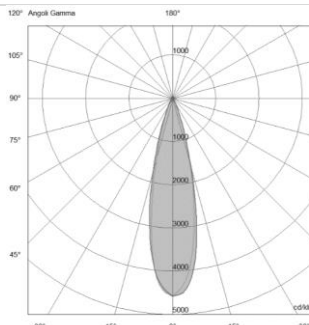
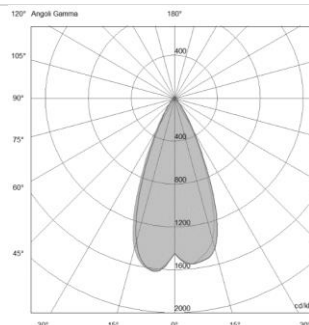
Dimensions	39 x 57 x 122 mm
Weight	423 gr
Installation	Wall mounting
Cut-out	-
Use	Outdoor

## ACCESSORIES

Filters	-
Decorative rings	-
Visors	-
Box/ Frame	-
Installation tool	-



## PHOTOMETRIC DATA

10° Lens – 2x2W	30° Lens – 2x2W	40° Lens – 2x2W																																																																																				
																																																																																						
<table><tr><th>H(m)</th><th>D(m)</th><th>E<sub>max</sub>(lx)</th><th>E<sub>av</sub>(lx)</th></tr><tr><td><b>10°</b></td><td></td><td></td><td></td></tr><tr><td><u>1.00</u></td><td>0.33</td><td>780</td><td>485</td></tr><tr><td><u>2.00</u></td><td>0.66</td><td>195</td><td>121</td></tr><tr><td><u>3.00</u></td><td>0.99</td><td>87</td><td>54</td></tr><tr><td><u>4.00</u></td><td>1.32</td><td>49</td><td>30</td></tr><tr><td><u>5.00</u></td><td>1.65</td><td>31</td><td>19</td></tr></table>	H(m)	D(m)	E <sub>max</sub> (lx)	E <sub>av</sub> (lx)	<b>10°</b>				<u>1.00</u>	0.33	780	485	<u>2.00</u>	0.66	195	121	<u>3.00</u>	0.99	87	54	<u>4.00</u>	1.32	49	30	<u>5.00</u>	1.65	31	19	<table><tr><th>H(m)</th><th>D(m)</th><th>E<sub>max</sub>(lx)</th><th>E<sub>av</sub>(lx)</th></tr><tr><td><b>30°</b></td><td></td><td></td><td></td></tr><tr><td><u>1.00</u></td><td>0.42</td><td>728</td><td>453</td></tr><tr><td><u>2.00</u></td><td>0.84</td><td>182</td><td>113</td></tr><tr><td><u>3.00</u></td><td>1.27</td><td>81</td><td>50</td></tr><tr><td><u>4.00</u></td><td>1.69</td><td>46</td><td>28</td></tr><tr><td><u>5.00</u></td><td>2.11</td><td>29</td><td>18</td></tr></table>	H(m)	D(m)	E <sub>max</sub> (lx)	E <sub>av</sub> (lx)	<b>30°</b>				<u>1.00</u>	0.42	728	453	<u>2.00</u>	0.84	182	113	<u>3.00</u>	1.27	81	50	<u>4.00</u>	1.69	46	28	<u>5.00</u>	2.11	29	18	<table><tr><th>H(m)</th><th>D(m)</th><th>E<sub>max</sub>(lx)</th><th>E<sub>av</sub>(lx)</th></tr><tr><td><b>40°</b></td><td></td><td></td><td></td></tr><tr><td><u>1.00</u></td><td>0.84</td><td>230</td><td>142</td></tr><tr><td><u>2.00</u></td><td>1.68</td><td>58</td><td>36</td></tr><tr><td><u>3.00</u></td><td>2.52</td><td>26</td><td>16</td></tr><tr><td><u>4.00</u></td><td>3.35</td><td>14</td><td>9</td></tr><tr><td><u>5.00</u></td><td>4.19</td><td>9</td><td>6</td></tr></table>	H(m)	D(m)	E <sub>max</sub> (lx)	E <sub>av</sub> (lx)	<b>40°</b>				<u>1.00</u>	0.84	230	142	<u>2.00</u>	1.68	58	36	<u>3.00</u>	2.52	26	16	<u>4.00</u>	3.35	14	9	<u>5.00</u>	4.19	9	6
H(m)	D(m)	E <sub>max</sub> (lx)	E <sub>av</sub> (lx)																																																																																			
<b>10°</b>																																																																																						
<u>1.00</u>	0.33	780	485																																																																																			
<u>2.00</u>	0.66	195	121																																																																																			
<u>3.00</u>	0.99	87	54																																																																																			
<u>4.00</u>	1.32	49	30																																																																																			
<u>5.00</u>	1.65	31	19																																																																																			
H(m)	D(m)	E <sub>max</sub> (lx)	E <sub>av</sub> (lx)																																																																																			
<b>30°</b>																																																																																						
<u>1.00</u>	0.42	728	453																																																																																			
<u>2.00</u>	0.84	182	113																																																																																			
<u>3.00</u>	1.27	81	50																																																																																			
<u>4.00</u>	1.69	46	28																																																																																			
<u>5.00</u>	2.11	29	18																																																																																			
H(m)	D(m)	E <sub>max</sub> (lx)	E <sub>av</sub> (lx)																																																																																			
<b>40°</b>																																																																																						
<u>1.00</u>	0.84	230	142																																																																																			
<u>2.00</u>	1.68	58	36																																																																																			
<u>3.00</u>	2.52	26	16																																																																																			
<u>4.00</u>	3.35	14	9																																																																																			
<u>5.00</u>	4.19	9	6																																																																																			
UGR = 13	UGR = 13	UGR = 19																																																																																				

## NOTES