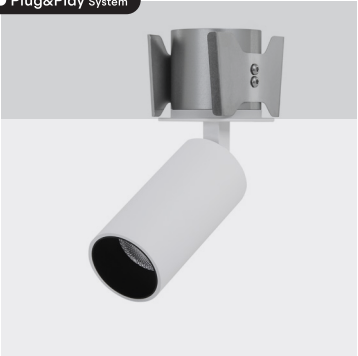


Ariel PN-m Plug&Play

Projectors



● Plug&Play System



IP40

500
600

330 g

P&P

Ø51

2

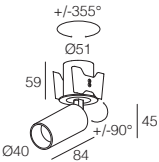
TM
66

2,6


Ariel PN-m Plug&Play fixing frame

FIXING FRAME A01727._0

FRAME FINISH
_ See module finish



Ariel PN-m Plug&Play module

	500 / 600mA Lumen Output 3000K	9W 500mA - 900 lm	11W 600mA - 1000 lm
14° Lens	7Q4819. _ _ _ _	7Q4820. _ _ _ _	
18° Lens	784819. _ _ _ _	784820. _ _ _ _	
24° Lens	7G4819. _ _ _ _	7G4820. _ _ _ _	
33° Lens	7E4819. _ _ _ _	7E4820. _ _ _ _	
52° Lens	754819. _ _ _ _	754820. _ _ _ _	

FINISH	CCT	DECORATIVE RING	OPTICAL FILTER
● H Black	● U1 2200K CRI > 90	● 4 Black	W Without Filter
● M8 Brown	● B2 2400K CRI > 90	● 8 Satin Gold	E Elliptical Filter
● G3 Gray	● X 2700K CRI > 90	● I Gold Chrome	H Hex Louver
● C Gothic Cement	● X1 2700K CRI > 95	● N Satin Nickel	P Prismatic Filter
● G7 Beige Gray	● 6 3000K	● 1 Shiny Chrome	S Softening Lens
● A6 Gray White	● W 3000K CRI > 90		
● S Warm White	● W1 3000K CRI > 95		
● 7 White	● K 3500K CRI > 90		
	● K1 3500K CRI > 95		
	● D 4000K CRI > 90		

FIXING FRAME



MODULE



discover more

SUGGESTED DRIVERS (not included)

500mA	CC10-F-500-SI	p. 700
600mA	CC23-F-600-SP	p. 701

INTERCHANGEABLE ACCESSORIES



p. 676

EXAMPLE CODE COMPOSITION

