

# Eclissi IP67

Steps light | IP67 | Class III | Dimmable



Eclissi 360



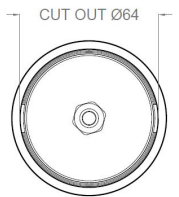
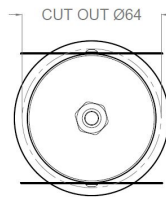
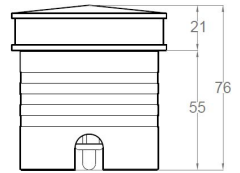
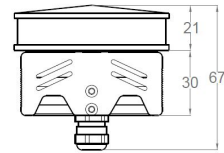
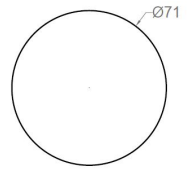
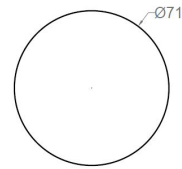
Eclissi 180



Eclissi 90



Eclissi 90x2



With aluminum recessed box

With Spring mounting support

## LIGHT SOURCE & OPTIC

### Power

4W

### Emission

Diffuse

### Beam Direction

Fixed, Symmetrical/ Asymmetrical

### Material

Methacrylate

### LED quantity

3

### Binning

2 MacAdam Steps

### Color temperature & quality

2700K CRI>80

2700K CRI>80

3000K CRI>80/90

4000K CRI>80

### Lifetime (Ta 25°)

L80 >60.000 hrs

### Output (3000K CRI>90)

357 lm

## FIXTURE

### Dimensions

Ø 71mm x H 67mm

### Material

Aluminium

### Body finishes

Black

Gray

Champagne gold

Dark bronze

Titanium

### Weight

300gr

### Mounting

Semirecessed on wall/floor

### Fixing

With accessories:

Aluminum recessed box

Spring mounting support

### Working temperature

-20° / +40°

## ELECTRICAL FEATURES

### Power supply

Constant tension: 24 Vdc

### Driver requirement

Remote (not included)

### Control

On/off

Push switch

Phase Cut

0/1-10 V

Casambi

DALI

### Feature

Water Infiltration Protection System

# Eclissi IP67

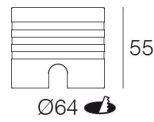
PHOTOMETRIC DATA (3000K CRI>90)

4W - 90°	4W - 90°x2	4W - 180°	4W - 360°
Total lumen output 45 lm	Total lumen output 45 lm x 2	Total lumen output 70 lm	Total lumen output 140 lm
Efficacy 11 lm/W	Efficacy 22 lm/W	Efficacy 18 lm/W	Efficacy 35 lm/W

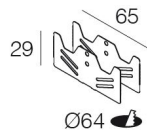
# Eclissi IP67

## INSTALLATION ACCESSORIES

**Aluminum recessed box (A01822.40)**  
Necessary element for installation at floor

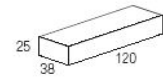


**Spring mounting support (A01834.\_0)**



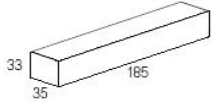
## SUGGESTED REMOTE DRIVERS

**On/Off :**  
CV30-F-24-PI



Ø 44

**Dimmable (DALI 2) :**  
CV25-D-24-PI



Ø 60

Other options upon request